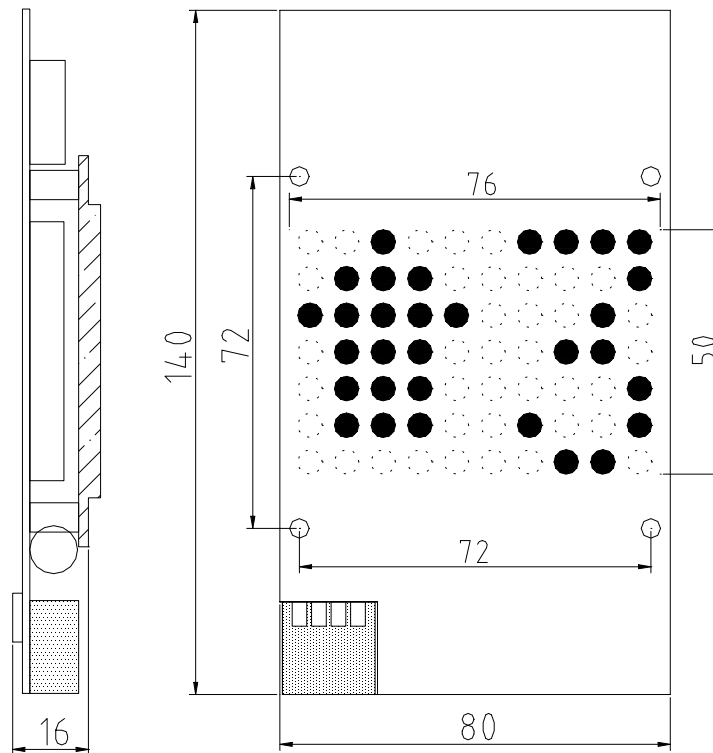


SMDU50-2AV

Faceplate Cut-Out: 60(h) x 86(w) mm

Fixings: 4x M3x20mm Studs

| | |
|-----------------------------------|--|
| Description | Single colour LED dot matrix display: 7 rows, 10 columns, 50mm high, 76mm wide, 5mm dots (3mm dots on super-bright blue). |
| LED Colour | Standard: Red or Green Optional: Bright Amber, Blue (standard & super-bright) or White |
| Standard Floor Library | -1, 0 to 9 and A to Z |
| Standard Features | Simultaneous single character position and running arrow Override hall lantern arrow Out of service symbol Horizontal scrolling messages Vertical scrolling (floor changes or running arrow and hall lantern arrows) |
| Switch Selectable Features | Vertical scrolling running arrow or floor change Hall lantern floor designations Landing or car indicator function Electronic chime volume |
| Electrical Detail | Continuous power supply: 12vdc to 37vdc or 12vac to 24vac Power supply consumption: 200mA @12vdc |
| General | Unit supplied loose with a drilled & rebated lens (4.5mm thick, dark grey tinted) & fixing spacers |
| Optional Items | Electronic chime Stainless steel faceplate & mild steel backbox Stainless steel surface mount enclosure Compact version – MFDU50-2A (115x63x40mm – see data sheet) |

THIS UNIT CONNECTS ONTO OUR 4-WIRE NETWORK; THEREFORE, A CONTROL UNIT MUST BE ORDERED FOR EACH LIFT